



www.yashdevelopers.in

Email. : yashdevelopers23@gmail.com

Contact

+91 99099 68054, +91 98244 14205

+91 94269 68833, +91 81411 53200



S.R. Square, Nr. Bhojaldham Residency,  
Opp. Great Eastern, Nikol, Ahmedabad.

Architect

**CAPITAL CONSULTANCY SERVICES**  
Ahmedabad

Structural Consultant

**DOLMEN ENGINEERING**  
& DESIGN SERVICES

A Prominent Business Hub...



CORPORATE OFFICE | SHOWROOM | SHOPS | HOSPITAL | GYM | HOTEL | JEWELLERY

SMART DESTINATION FOR  
SMART AGE BUSINESS



LET YOUR BUSINESS  
PROSPER NATURALLY...

S.  
R.

S  
Q  
U  
A  
R  
E



MAKE YOUR BUSINESS LOCATION  
**YOUR IDENTITY...**

S.  
R.  
S  
Q  
U  
A  
R  
E





### RETAIL OUTLETS



Mobile Store



Electronic Store



Cloth Store



Cosmetic Store



Super Market

### BUSINESS HUB



Corporates



Consultants



Dealer



Travels



Telecom



### BANKING



Bank



Safe Vault



ATM



Insurance



Foreign Exchange

### RESTAURANTS



Banquet Hall



Restaurants



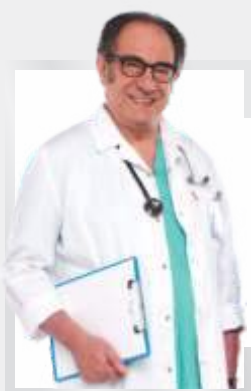
Fast Food



Ice Cream Parlor



Pizza Corner



### HEALTH CARE



Hospital



Medical Store



Pathology Lab



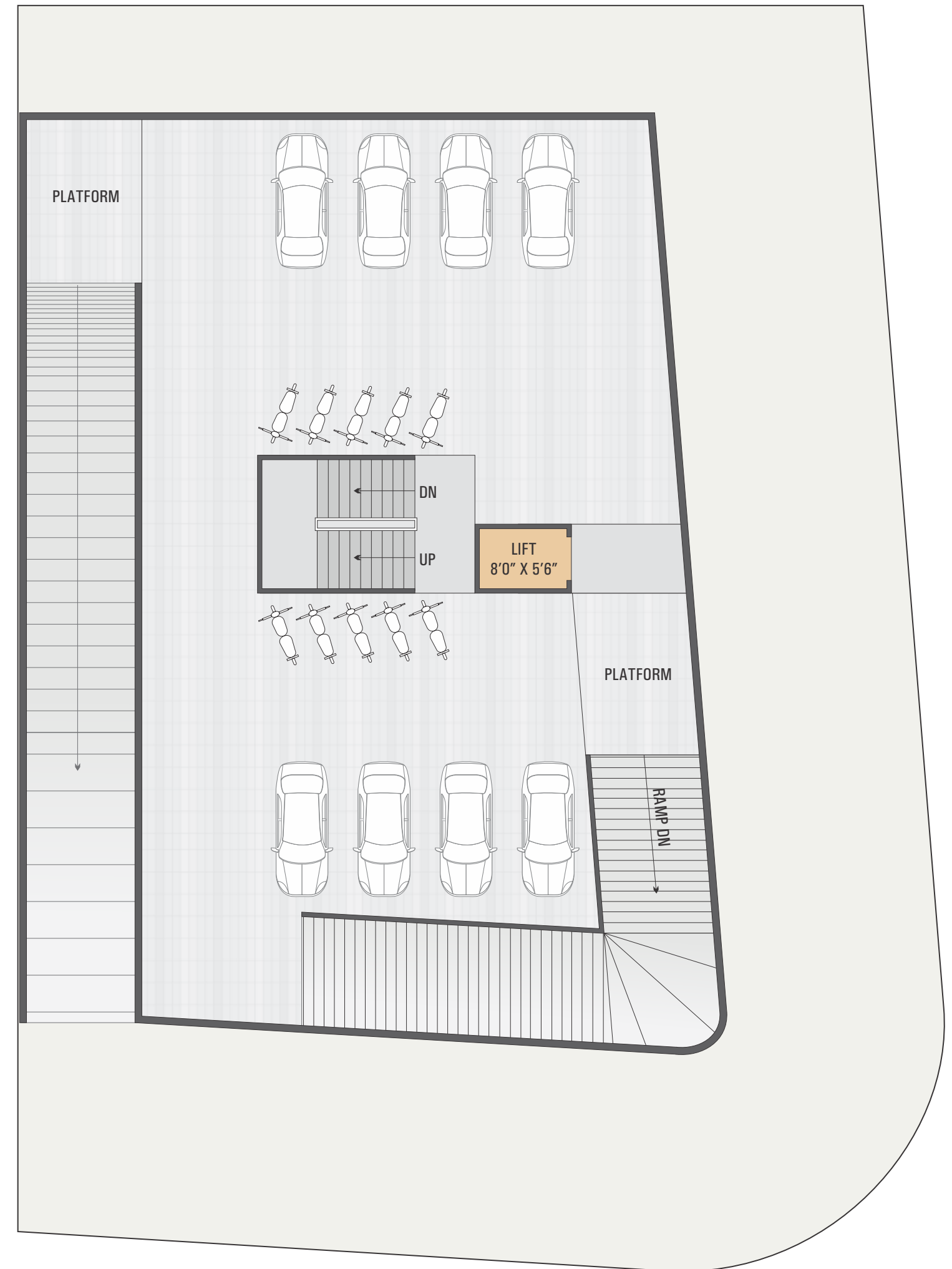
Clinic



Gym



## 1st & 2nd BASEMENT | PLAN

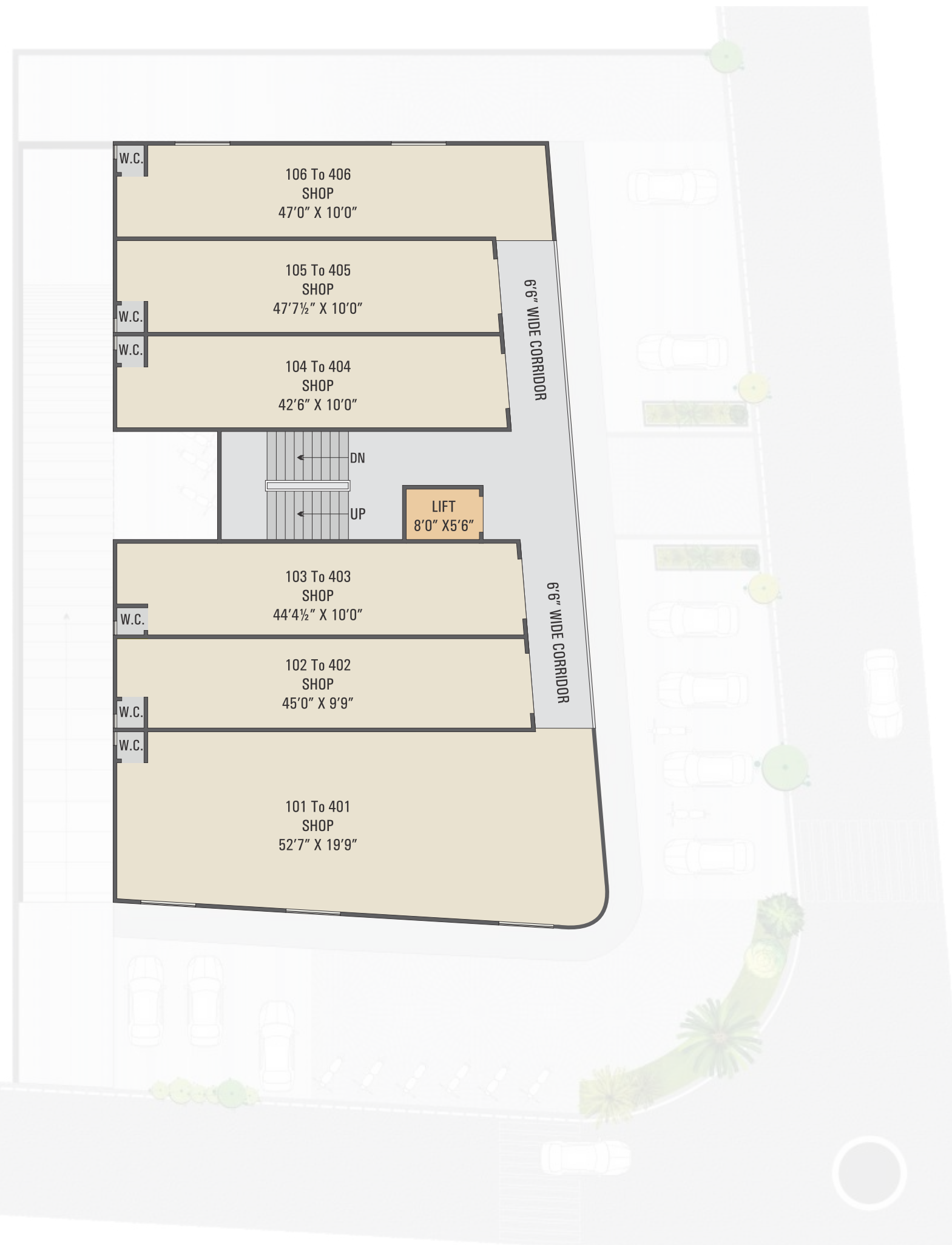




# GROUND FLOOR PLAN



# 1st, 2nd, 3rd, 4th FLOOR PLAN



A BUSINESS ENVIRONMENT  
WITH TOUCH OF PLEASURE...



BRILLIANT  
DESIGN  
with a mark of  
DIFFERENCE



...designed to  
pamper the  
epicure  
in you!



BEST AMENITIES  
WITH ADVANCE FEATURES...



Double Basement



High-Speed Elevator



24 X 7 Water Supply



## SPECIFICATIONS



### Structure

Earthquake resistance R.C.C. Frame Structure.



### Wall Finish

Internal mala Plaster with white putty, External double coat Sand Faced plaster with acrylic paints.



### Showroom/Offices/shops

Good quality Rolling shutter / Door with oil paint.



### Flooring

Good quality vitrified Tiles Flooring in entire unit.



### Parking

Sufficient parking in Front side of Ground Floor & 2 Basement.



### Electrification

Concealed copper wiring & good quality Accessories with sufficient Electric points.



### Lift

Branded Automatic Lift for easy accessibility.

## NOTES

- Stamp duty, Registration charges, GST, Service Tax (At actual) and any such present and future additional Government taxes will be borne by members. Maintenance deposit, development charges and electrical infrastructure, GEB, charges extra.
- Possession will be given only after one month of all settlement of all accounts.
- Continues default in payment leads to cancellation of booking and refund when new client of same booking after deduction 10% against administrative charges from booking amount.
- Architect developers reserve all the rights to change the plan, elevation, specification or any details will be binding to all.
- If any member want to sell office/shops before Possession than first they pay the full Amount of Payment shop/office and after B.U. permission it will be hand over to member.
- Change in any circumstances, internal changes will be permitted with prior permission in writing, No external changes would be allowed.
- Out door A/c. unit will be fitted as per provision in the designates place by the architect.
- All the buyers / members are bound to follow all rules / instruction of association for future maintenance of building.
- This brochure is for information only, it does not part of the agreement or any legal documents.
- Subject to Ahmedabad Jurisdiction.